

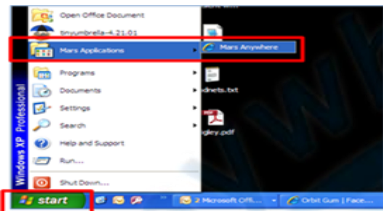


# MarsAnywhere Quick Reference Guide

Follow the steps below to use MarsAnywhere.

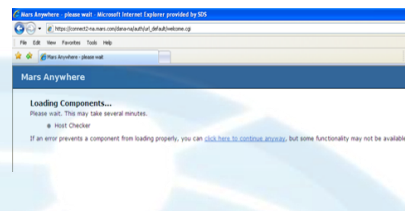
Select the MarsAnywhere link from your Mars Applications menu (under your 'Start' button)

1



You will see a screen that states "Loading Components"

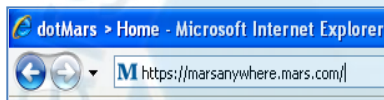
4



**PLEASE NOTE:** You can also access MarsAnywhere by typing the following address in Internet Explorer

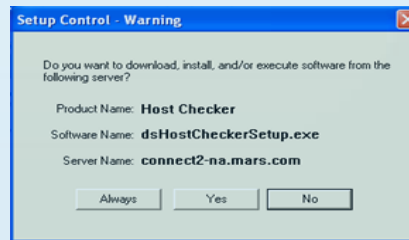
<https://marsanywhere.mars.com>

2



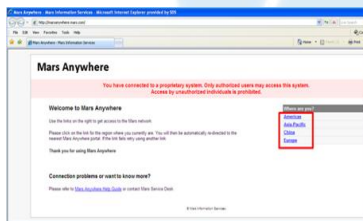
You may also see a dialog box asking to download or install software for Host Checker. If so, please select the 'Always' button.

5



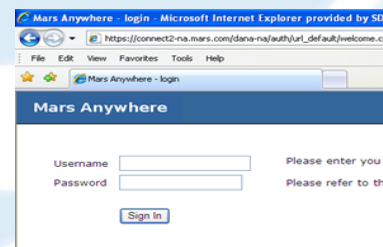
Select the appropriate region you are working from (i.e. Americas, Europe, etc)

3



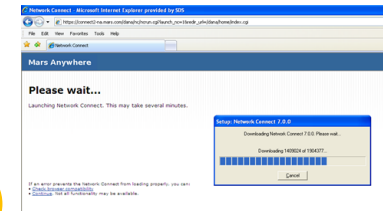
You can enter your Username (5 and 3) and your MarsWeb Domino password.

6



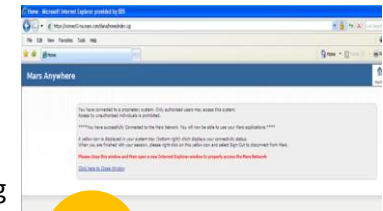
You may see a screen similar to the one shown as Network Connect is launching.

7



Once you have successfully connected to the Mars Network, you will see the following screen:

8



**You are now ready to begin working remotely using your Mars laptop!**

## Disconnecting

To stop using MarsAnywhere, simply select 'Sign Out' by right clicking on the padlock in your System Tray.



## Where to go for Help?

If you have questions, please contact the **Mars Service Desk** for assistance.