

The page features a decorative graphic consisting of several overlapping blue circles of varying sizes and shades, connected by thin blue lines. The circles are arranged in a roughly vertical path, with the largest one at the top and bottom, and a smaller one in the middle. The background is white with a faint, light blue watermark of a globe and the text "Mars Anywhere".

Mars Anywhere guide for Wrigley users

Quick reference guide for new users

The purpose of this document is to provide quick guide how to use Mars Anywhere remote access service for the first time.

Mars Service Desk
November, 2011

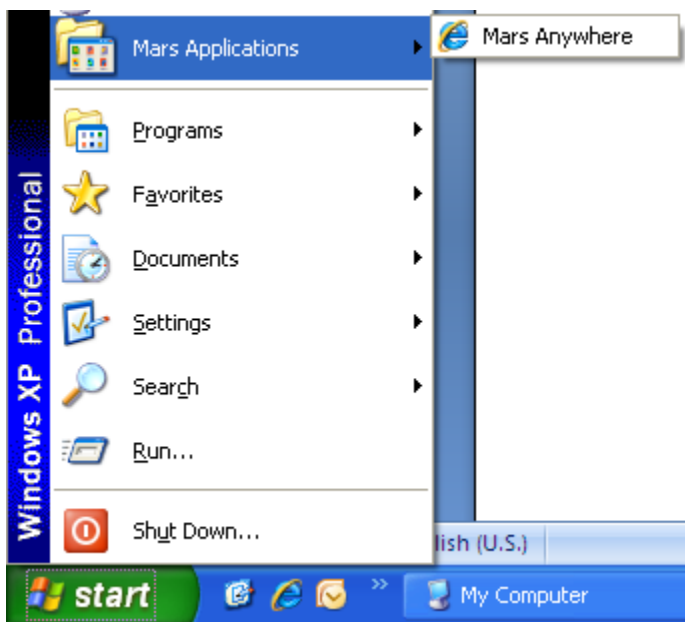
In terms of the CONNEX project a single remote connection solution was developed for both Wrigley and Mars users substituting currently used solutions in both divisions.

Below you will find quick steps describing how to install, use and troubleshoot the application by yourself.

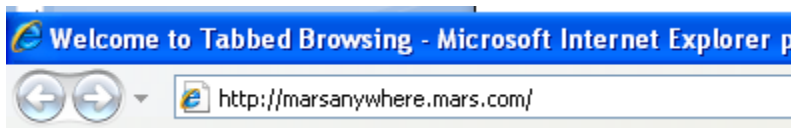
Installation

In order to start using Mars Anywhere you don't need to have any application preinstalled on your computer. All required components will be installed during first time you use the service.

1. Select Mars Anywhere from START → Mars Applications menu:



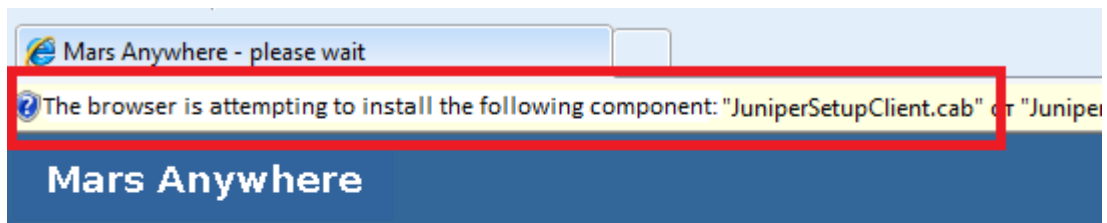
PLEASE NOTE: You can also access Mars Anywhere by typing the following address in Internet Explorer: <http://marsanywhere.mars.com>



2. As soon the start page is loaded choose appropriate region you're working from (i.e. Americas, Europe etc.):



3. You will see the screen stating "Loading components":



Loading Components...

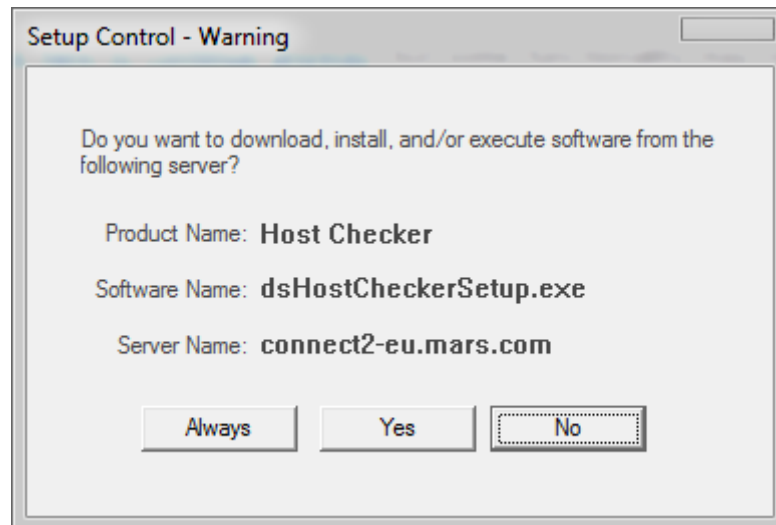
Please wait. This may take several minutes.

- Host Checker

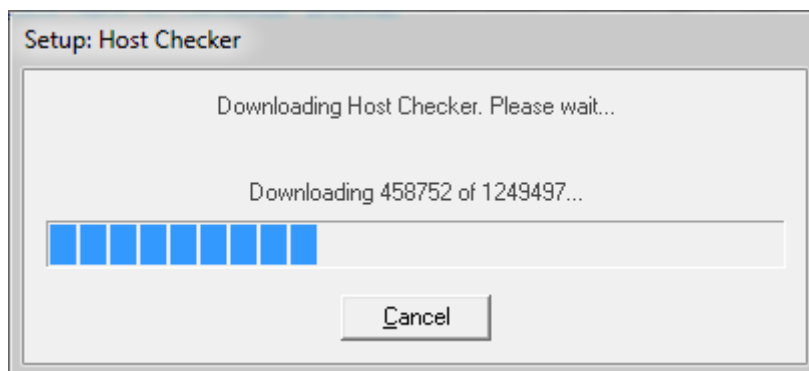
If an error prevents a component from loading properly, you can [click here t](#)

PLEASE NOTE: During the first use of Mars Anywhere you will see the following drop down message: "The browser is attempting to install the following component: JuniperSetupClient.cab". Right click on this message and choose "**Download component...**"

- When component is installed during first load you will see the message below, you should press **“Always”** button:



- After you pressed **“Always”** button, the Host Checker component will be installed:

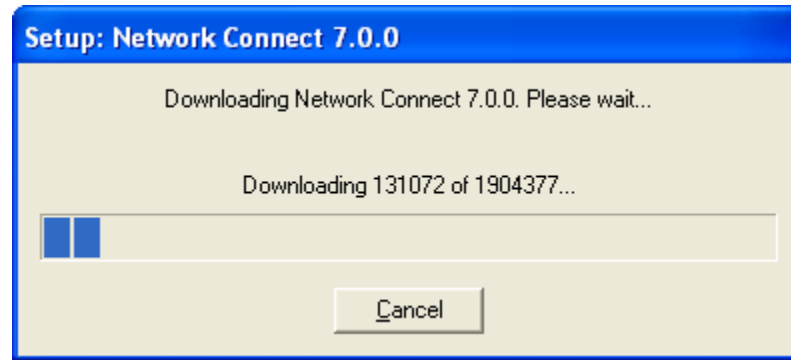


- When Host checker is setup successfully, will see the log in screen:
Here you will need to type username and password that is used to log on your computer and press **Sign in** button:

Mars Anywhere

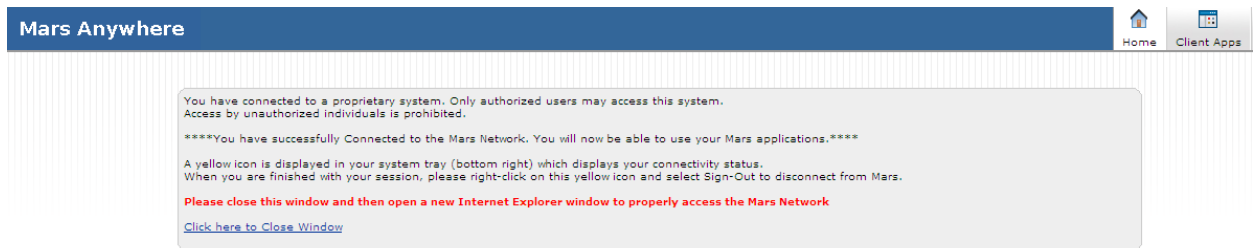
Username	<input type="text"/>	Please e
Password	<input type="password"/>	Please n
<input type="button" value="Sign In"/>		


7. As soon as done you during first use of Mars Anywhere you will the window:



Wait until the Network Connect 7.0.0 is downloaded and installed.

8. Once the component is successfully installed you will see the following screen saying that ******You have successfully Connected to the Mars Network. You will now be able to use your Mars applications.******



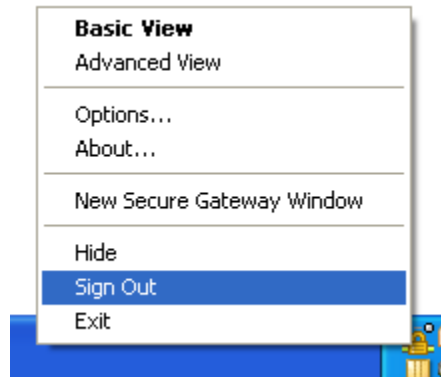
9. In the System Tray (right bottom corner of your screen) you will see the icon  with green blinking lights.
10. The connection is successfully established.

Working with application

Once all necessary components are installed during the first use of Mars Anywhere, the further connections will take less time. All you'd need to do is type in your username and password and press **Sign In** button.

How to disconnect?

To terminate Mars Anywhere service you need right click on the Mars Anywhere icon in the System Tray and select **Sign Out**:



Having troubles with Mars Anywhere?

For any problems with Mars Anywhere please contact **Mars Service Desk** (mars.service.desk@effem.com)

